

Supporting Kidds

The Center for Grieving
Children and Their Families



We now accept insurance!

Supporting Kidds recognizes the considerable economic challenges that families often face during times of loss and grief. These financial challenges can sometimes make grief support services seem like an unattainable luxury.

Since our inception, we have worked diligently to ensure no family is ever denied services for inability to pay. While we do charge a fee for clinical services, we offer competitive pricing and financial aid and scholarships for those unable to afford our standard fees.

As part of our ongoing effort to ensure that all families coping with loss and grief will be able to obtain services at Supporting Kidds, we are now accepting insurance for eligible therapy services. We can now accept all forms of *Blue Cross Blue Shield* insurance, and *Delaware Physicians Care*, a Delaware Medicaid Provider. We will let you know as we accept more insurance companies.

We will continue to offer *scholarships and financial aid* to families who don't have insurance or whose insurance plans we are not currently accepting. Scholarships and financial aid will still be available for our services not eligible for insurance reimbursement, such as consultations and support group services.

Welcome Interns:

Steve Palma, a 5th year Doctoral candidate at Widener University's Institute for Graduate Clinical Psychology.

Sophie DeMesse, a Masters degree student in the Administration of Human Services at Wilmington University.

Lauren Torretta, a senior at the University of Delaware, majoring in Human Services.

THANK YOU ALL FOR YOUR SERVICE!

Expressions of Grief Art Exhibit

Artwork by Kristin Lynch from our 2012 Expressions of Grief exhibit.

Volunteer Opportunities

Gardening Day:
August 8, 12-3pm
All welcome.

Help staff our booth
at the Mushroom
festival in Kennett
Square: Sat. Sept. 7

Trick or Treat
Hockessin:
Help hand out treats
and run the craft:
Sat. Oct. 26

Please RSVP

Back to School Night

Heading back to
school after a loss
can be tough. Come
join other grieving
families and learn
some ways to cope.

Tues. Sept. 3

For bereaved
children ages 5-18
and their caregivers.

Please register,
302-235-5544 or
email

Healing Pathways



Schools and their students are invited to participate in our second annual Expressions of Grief Art Exhibit. This event will be part of Delaware's Grief Awareness Week and the exhibit will run from Nov. 1 - Dec. 8.

Participation in "Expressions of Grief" is an excellent way for teachers, parents, and students to begin a dialogue about grief. While this can be a difficult topic, Supporting Kidds is available to help. The invitation to schools and the details can be downloaded [here](#).

The exhibit can include 2- and 3-D art, videos, short plays, poetry, short stories, and musical numbers (recorded). Entries are due by Oct. 25 and must be accompanied by the signed [entry form](#).

Please help publicize this event by forwarding this to any school teachers, staff, or counselors that you know.

Contact [Carol](#) for details, questions, or to get involved.

Pathways Through Life

This is our new **4-week support group** specifically for those families who have already completed our Healing Pathways bereavement support program. Pathways Through Life offers grieving families the opportunity to continue their exploration of the grief journey and to connect with other grieving families.

Pathways Through Life begins Thursday October 3rd and continues each Thursday evening through October 24th. Please contact us to register, 302-235-5544 or [email](#).

5K Run/Walk - time to start training

Join us **November 3rd** for the Cathy Wheeler Hartman Memorial 5K, the *Be Good, Be Safe, Have Fun Run*.

Cathy's family created this race to raise money for a worthy cause to honor her memory and to serve the community with an event that will spread Cathy's positive attitude.

All of the proceeds will be donated to Supporting Kidds.

You can register now at:

www.races2run.com/events

Scroll to November 3rd and click "Be Good, Be Safe, Have Fun Run."

Our next 6-week bereavement support group, Healing Pathways, begins Wed. Oct. 9.

Please register, 302-235-5544 or [email](#)

Come for a Tour

This is a great way for you, or a friend, to learn more about Supporting Kidds.

Upcoming dates:

Tues. July 23 at 7pm

Wed. Aug. 21 at 10am

Thurs. Sept. 19 at 12pm

Please **RSVP**

Donate Anytime

You can donate on our [website](#) or by mail.

Make your check payable to:

Supporting Kidds
1213 Old Lancaster Pike
Hockessin, DE 19707

Support us at work:
United Way #0728
SECC (DE) # 70043
Ches.Bay CFC #69638

Donate much needed supplies via [Amazon.com here](#)

Your donations help ensure that no child grieves alone.

Corporate Sponsors

Rather than ask local businesses to sponsor each event, we now have Corporate

Our goal is 200 pre-registered racers. Register now and tell a friend!

Renovations are underway

The old kitchen cabinets and appliances were removed and fresh paint is on the walls.

OLD



The attic stairs were replaced and we are now safely moving items to the attic. The "garage" has been emptied and will soon be transformed into our copy/office supply center. The renovations will enhance functionality, improve safety, and create an additional group space for our programs.

Thank you to Gene and his crew at [Heffner Home Consulting](#). And thank you to the [Hockessin Athletic Club](#) for funding the renovations.

Thank you for your interest and support,
Dr. Stephanie Traynor, PsyD, MBA
Executive Director

Supporting Kidds

The Center for Grieving Children and Their Families
1213 Old Lancaster Pike, Hockessin DE 19707
302-235-5544, support@supportingkidds.org
www.supportingkidds.org

Learn more

[Newsletter Archive](#)
[Get Involved](#)
[More On Us](#)

Sponsorship Packages available. It's a great way to support us and have your business recognized at our popular events throughout the year. Levels range from \$5,000 to \$500.

Click to learn more:
[sponsorship](#)

Total Family Solutions is our first Silver Sponsor of 2013. They provide out-patient mental health services in DE, MD, and NJ.



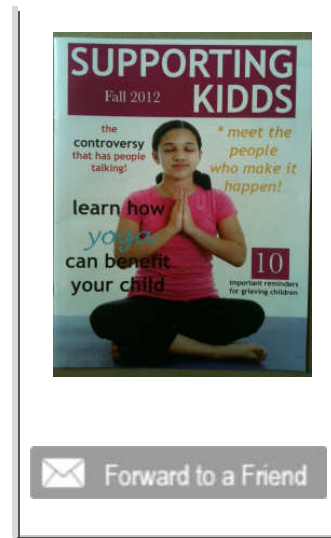
856-772-5809

Stay Connected



Be sure to view our video on YouTube!

You can read our magazine online [here](#).



[Forward email](#)



This email was sent to deweydonovan@verizon.net by cboncelet@supportingkidds.org | [Update Profile/Email Address](#) | Instant removal with [SafeUnsubscribe™](#) | [Privacy Policy](#).

Supporting Kidds | 1213 Old Lancaster Pike | Wilmington | DE | 19707



Try it FREE today.